



# Equity and Social Policy

4th Regional Development and Governance Symposium

Governance of Social Development

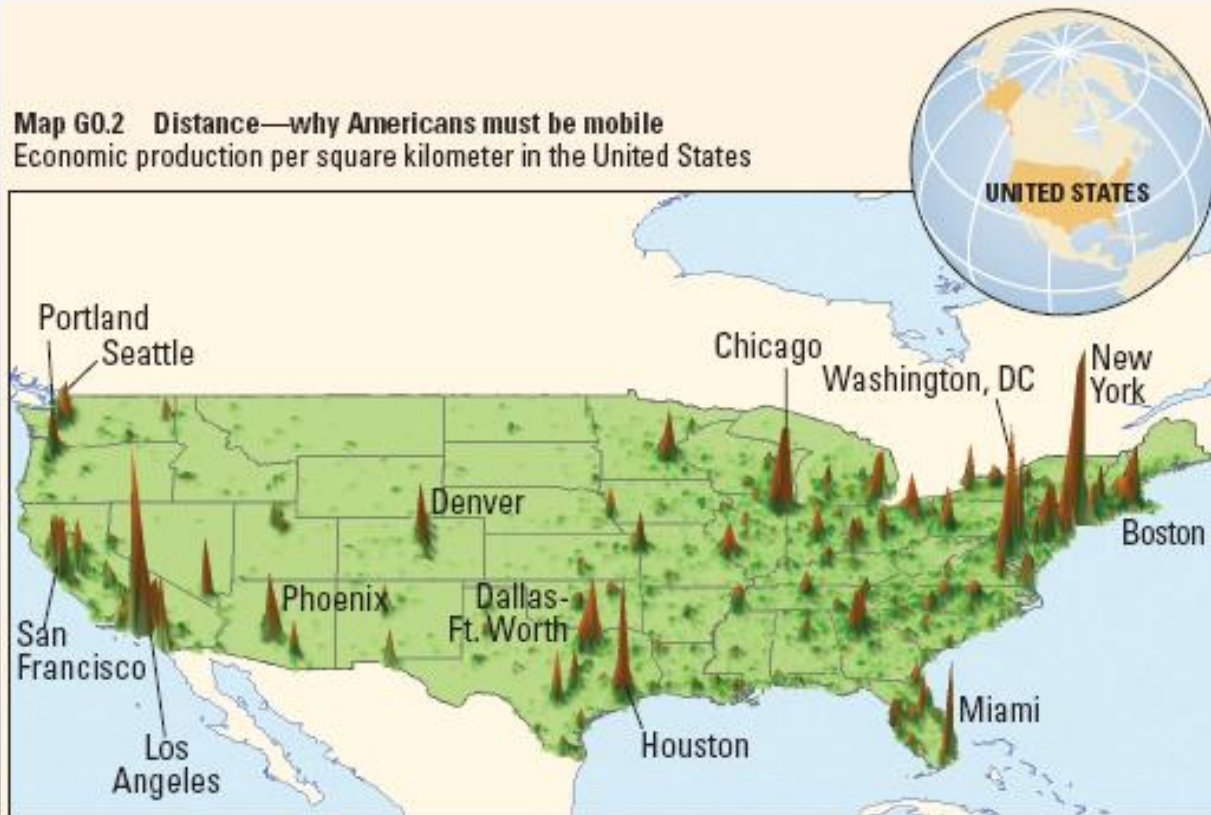
19-20 November 2009 – Ankara

Mark Thomas

Lead Economist

The World Bank – Ankara

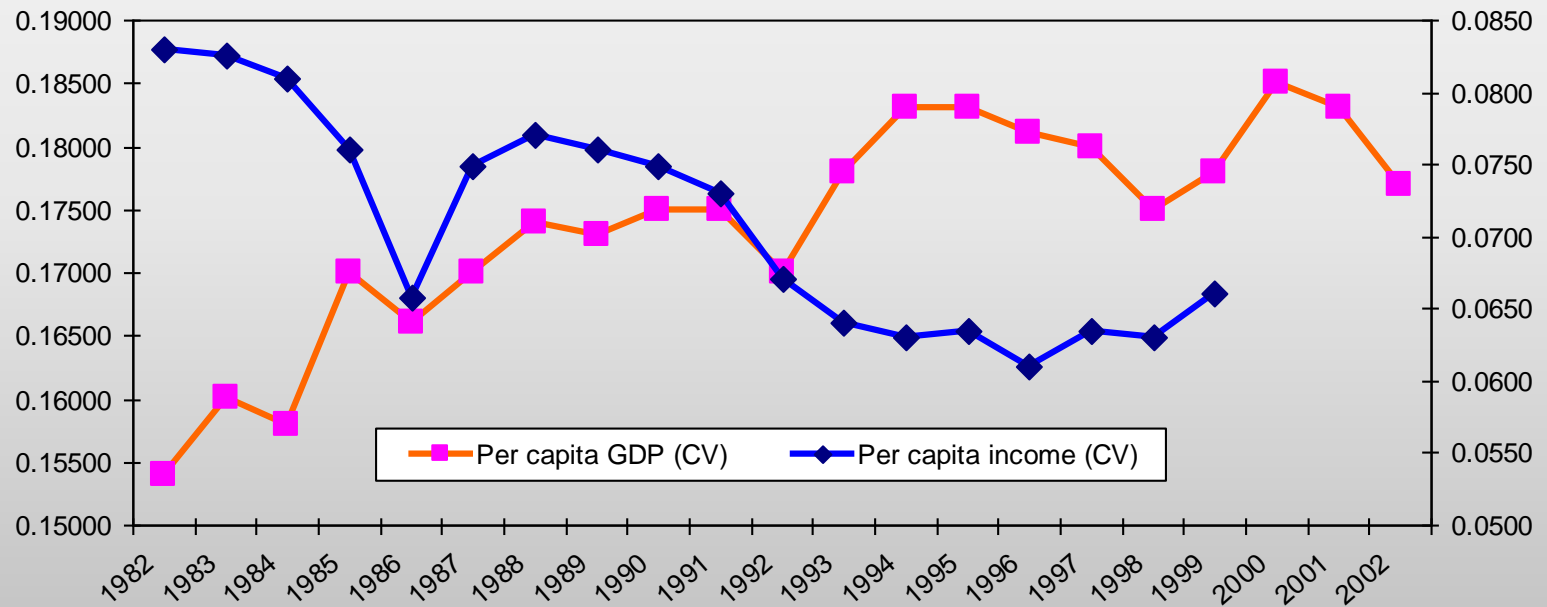
**Map G0.2 Distance—why Americans must be mobile**  
Economic production per square kilometer in the United States



Source: WDR 2009 team and World Bank Development Research Group based on subnational GDP estimates for 2005. See also Nordhaus (2006).

# France: spatially blind policies with spatial impact

France (NUTS2 Regions):  
Increasing spatial concentration and decreasing spatial disparities



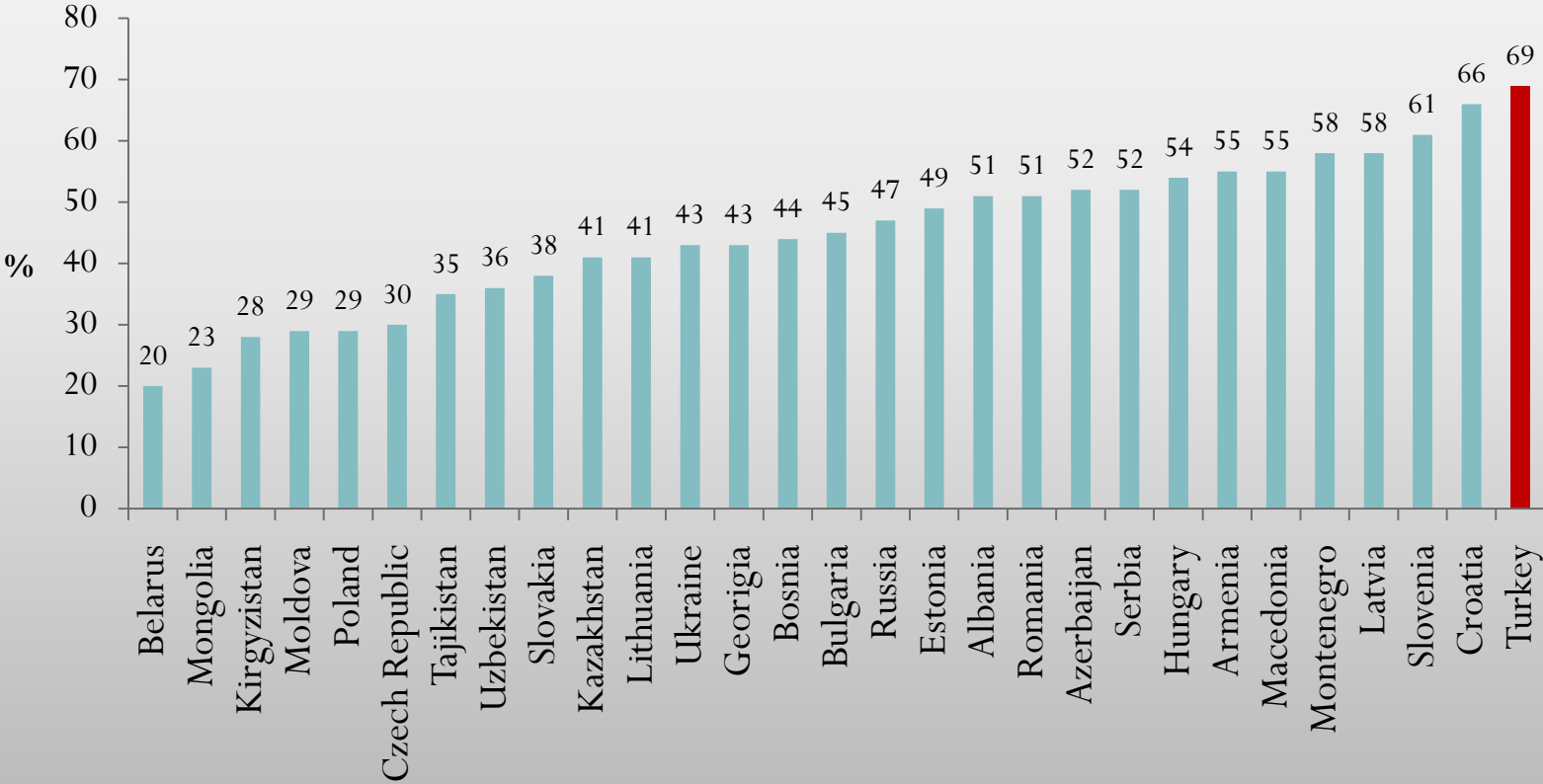
Source: Martin 2005

#1. Social policy is regional policy

---

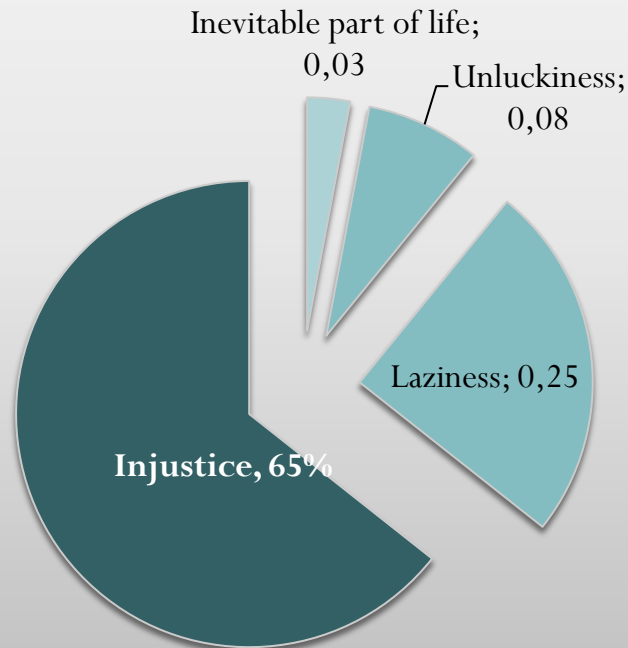
# Turks are “inequality averse”

The share of the population that strongly agrees that "the gap between rich and poor should be reduced in the country"



# Turks believe inequality is unfair

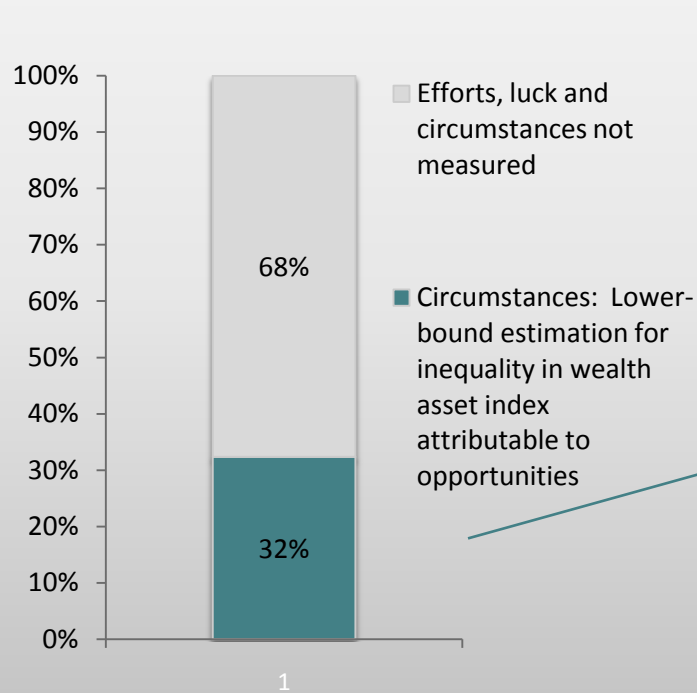
**What is the Main Reason why there are some people in need in Turkey today?**



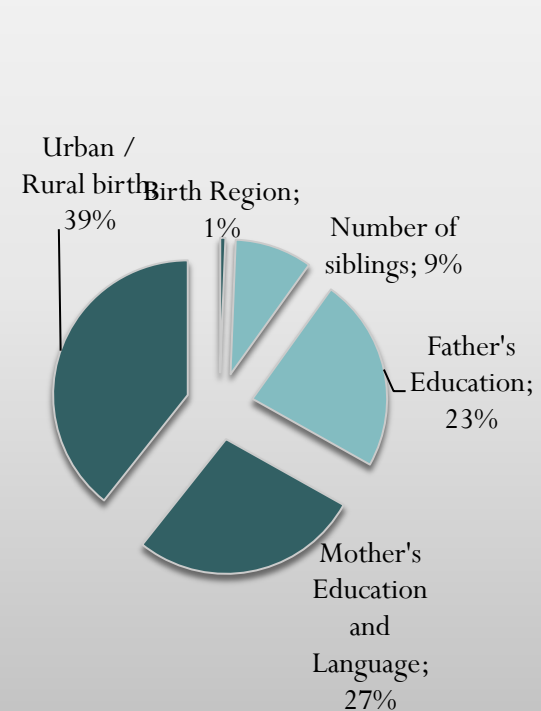
*Source: Life in Transition Survey (2006)*

# “Circumstances” in Turkey means a rural or a low education background

## Decomposition of wealth inequality in Turkey

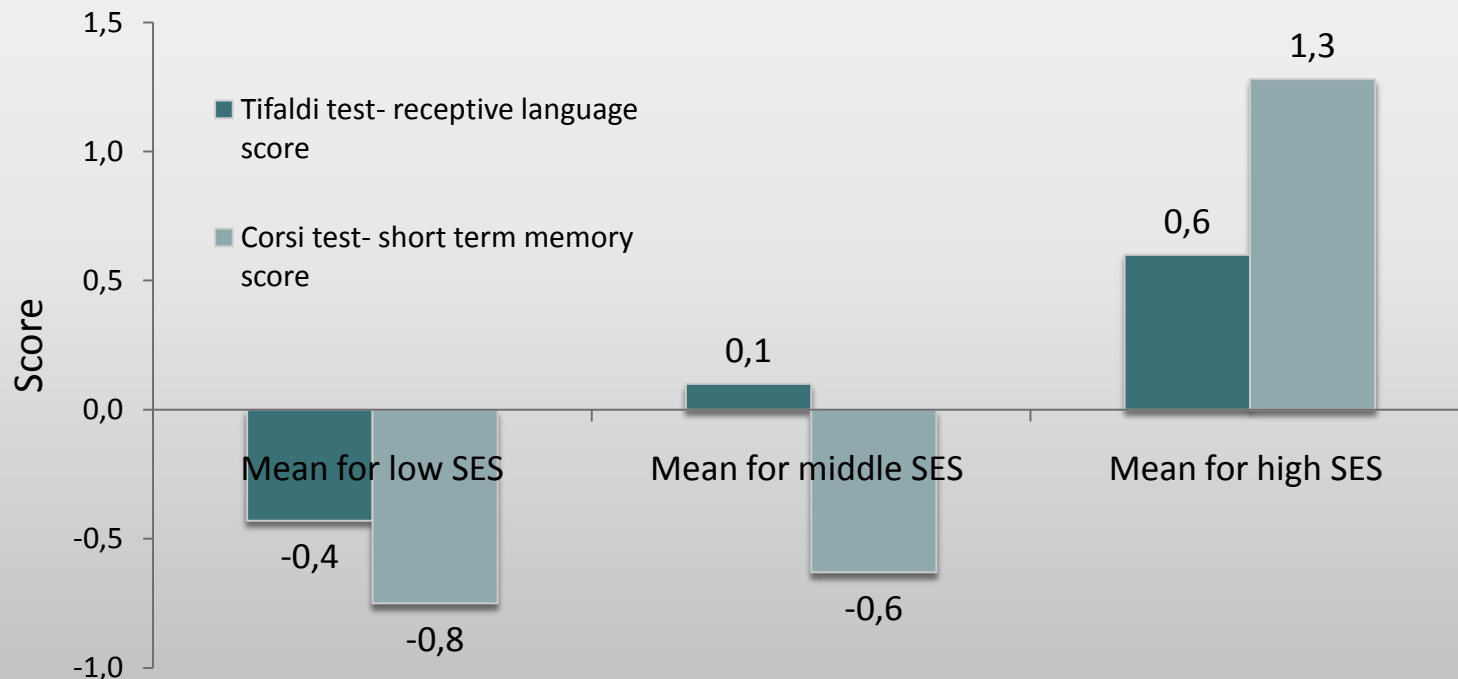


## Partial shares of opportunities contributing to inequality



# Differences in opportunity start young

## Cognitive Development Scores of 36-47 month old children in Turkey

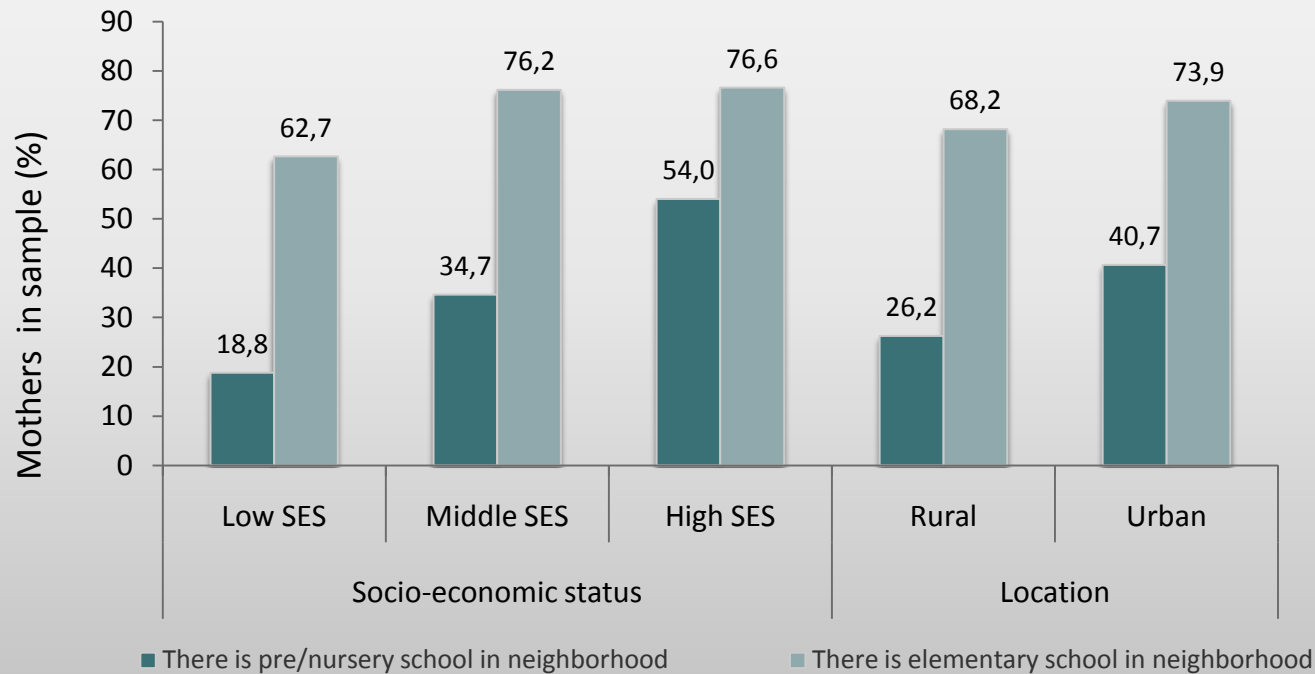


Source: Data from the Study of Early Childhood Developmental Ecologies in Turkey, 2008, 36-47 month old children and their families.



# Early childhood inputs are unequal

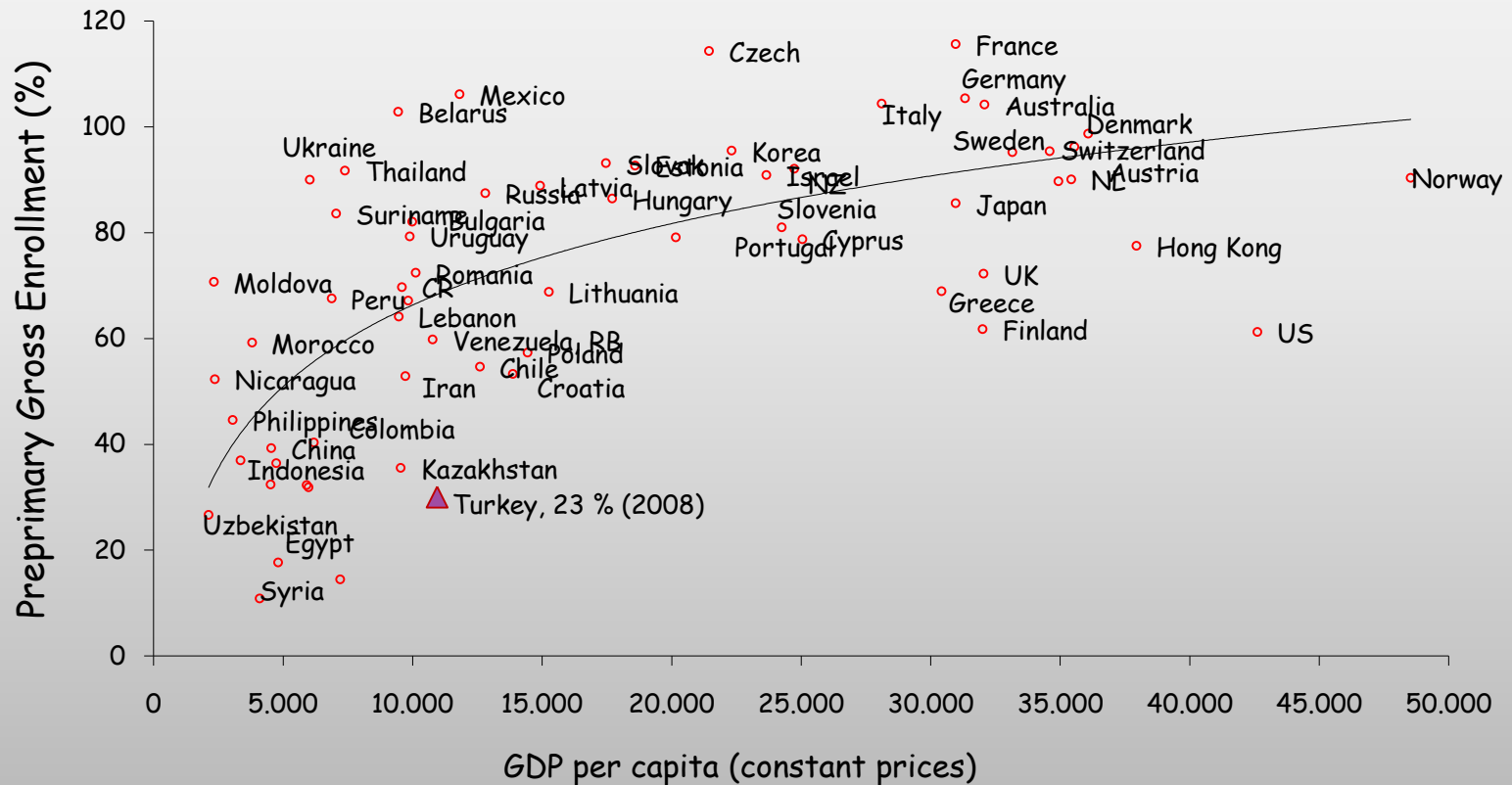
Preschools and Daycare Access, by socioeconomic status and rural/urban location [2008]



Note: Socio-economic status is defined as an index that combines income, household assets and the educational level of adults in the household.

Source: The Study of Early Childhood Developmental Ecologies in Turkey (2008), Koc University.

# Preschool access: low by international standards

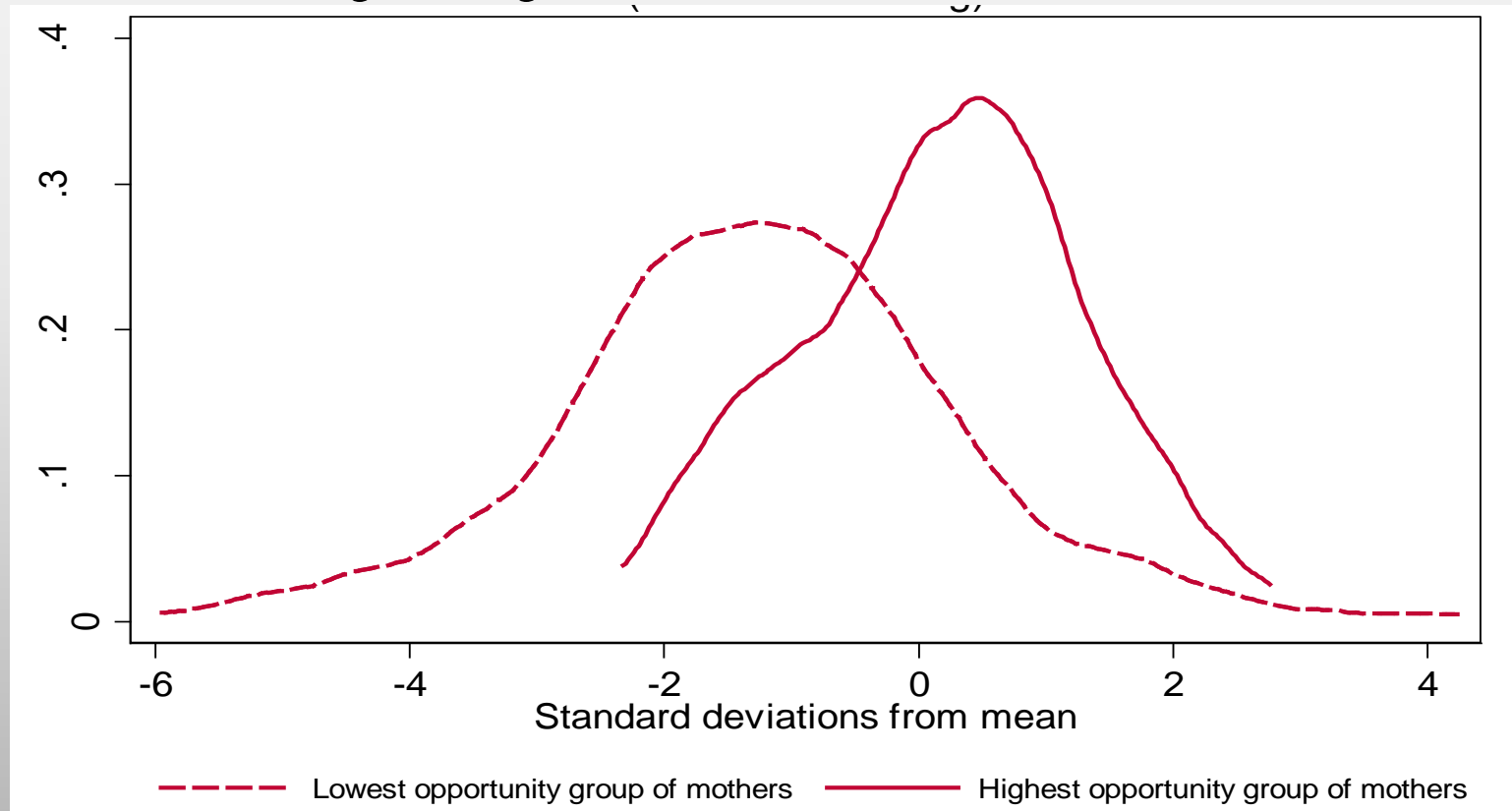


#2. Early education is a key social investment for reducing (regional) inequality

---

# Education = transmission

Height for Age Measures for LINOg and HINOg



Note: Stunting is defined as height for age less than two SDs below the mean.

# Unexpected channels of inequality: female labor force participation

- Expanding education of the 20-39 year olds today by one year (equal to measured impact of pre-school education)
- Two channels:
  - increased education on earnings
  - occupational distribution
- Impacts:
  - 8 percent increase of mean earnings
  - 14 percent increase in female labor force participation rate
  - 5 percent reduction of poverty

#3. Labor policy = social policy =  
regional policy

---

# Conclusions

---

1. Social policy is regional policy
2. Early education is a key social investment for reducing inequality
3. Labor policy is also social policy



Thank You – Teşekkür Ederim

[mthomas1@worldbank.org](mailto:mthomas1@worldbank.org)