

TÜRKİYE EKONOMİSİ'NDE YEŞİL BÜYÜME: CO2 Salımlarıyla Mücadele Üzerine Gözlemler

A. Erinç Yeldan
Bilkent Üniversitesi

Türkiye'nin Karbon Patikası: Gözlemler

Carbon Emissions and Energy Intensities									
	1990			2000			2012		
	World	OECD	Turkey	World	OECD	Turkey	World	OECD	Turkey
Total CO2 (Million Tons) (1)	20,974	11,140	126.9	23,756	12,615	200.6	31,734	12,146	302.4
CO2 per capita (tons) (2)	3.977	10.413	2.303	3.898	10.929	3.122	4.510	9.684	4.037
CO2 / \$GDP (3)	0.687	0.444	0.471	0.591	0.385	0.519	0.581	0.308	0.482
Energy Consumption / \$GDP (4)	11,350	7,904	7,326	10,047	7,243	8,193	9,991	6,228	8,129

Source: US Energy Information Association

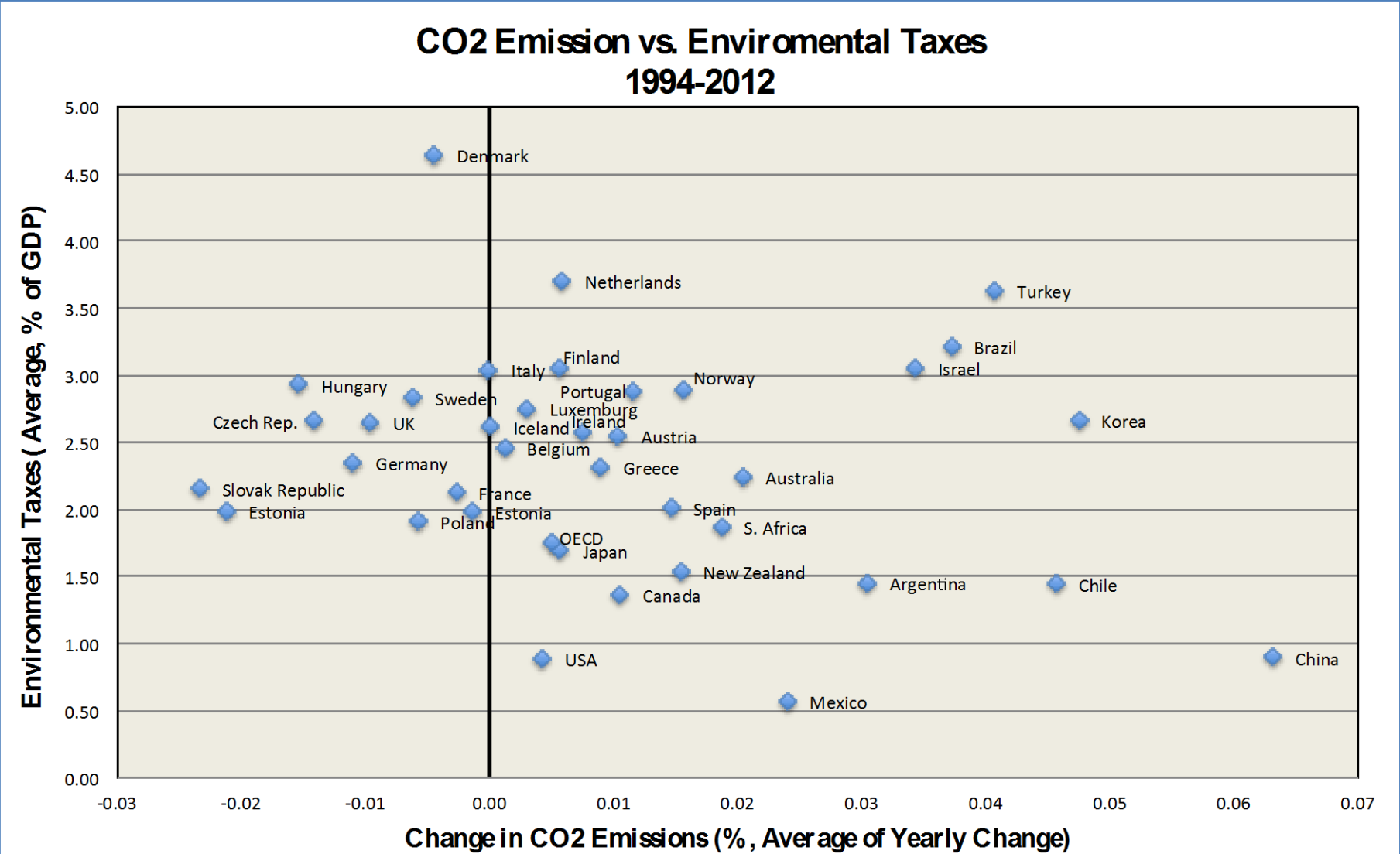
(1) Total CO2 emissions from combustion of energy (Million metric tons)

(2) Metric tons of CO2 per person.

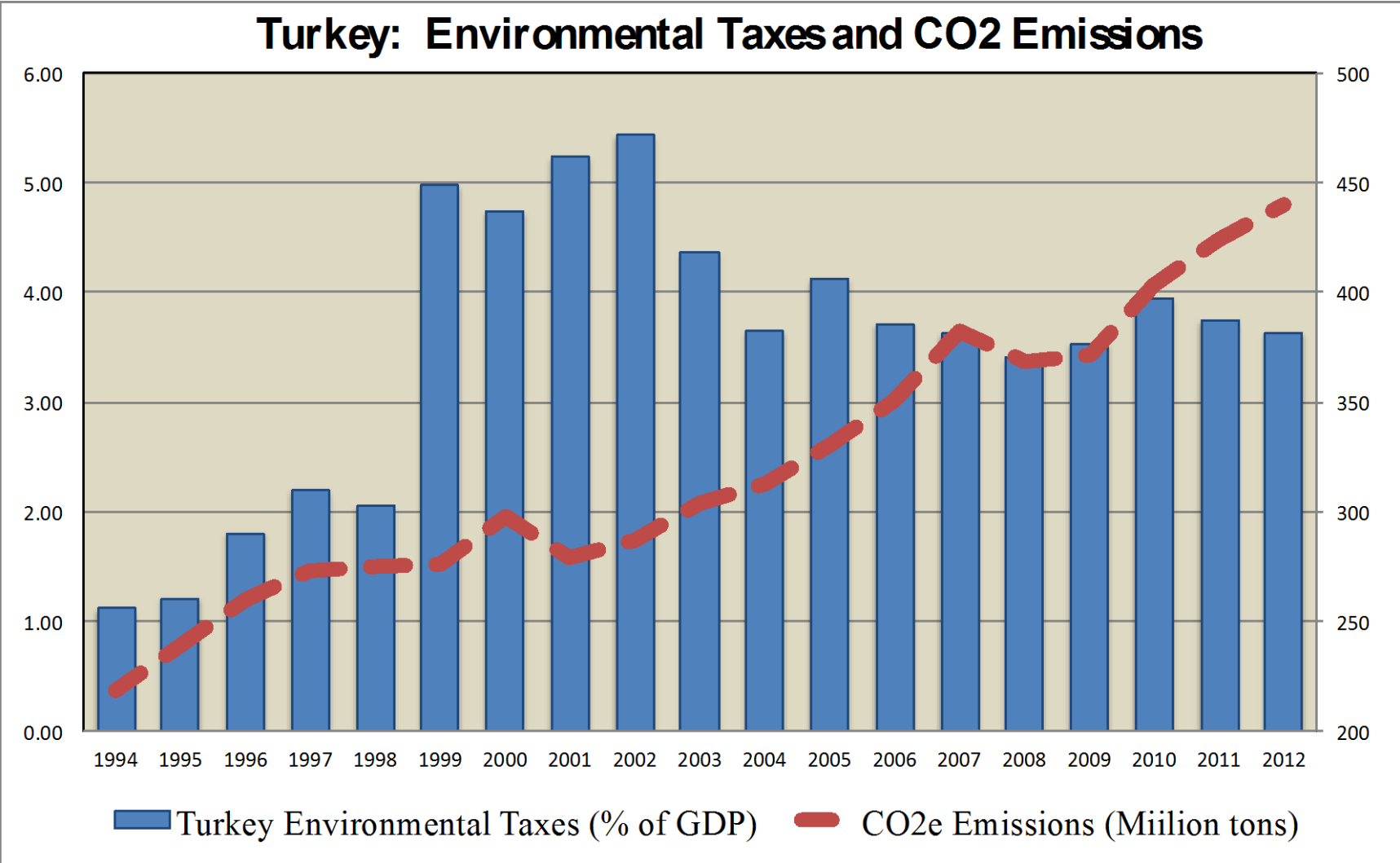
(3) Metric tons of CO2 per 1000 per year 2005 \$, using market exchange rates

(4) Total primary energy consumption per \$GDP. (Btu per year per 2005 \$ of GDP, using market exchange rates).

Türkiye'nin Karbon Patikası: Gözlemler



Türkiye'nin Karbon Patikası: Gözlemler



Karbon Bütçesini Tasarlamak Üzerine Düşünceler

- *Tom Athanasiou & Paul Baer tarafından geliştirilen **Equity Reference Calculator** ve Sivan Kartha & Eric Kemp-Benedict (**Stockholm Environment Institute**) tarafından geliştirilen **Pledge Scorecard***
- **Equity Reference Calculator** ve **Pledge Scorecard** küresel boyutta uygulanan tasarımlar olarak, gönüllülük esasına göre uygulanacak ulusal CO2 salım hedeflerini farklı hedefler altında saptanmasına olanak vermekte.

Climate Equity Reference Calculator

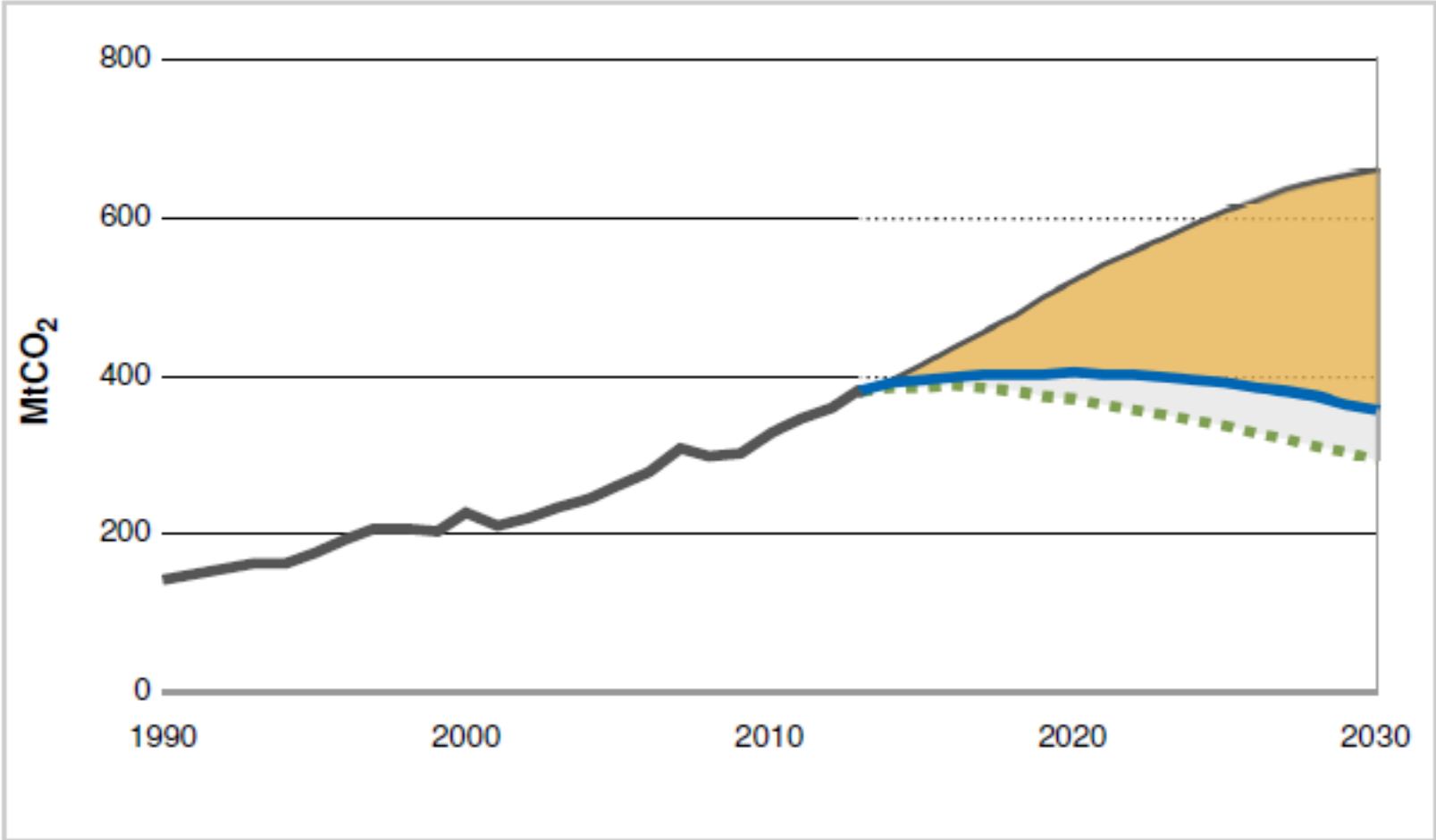
Mitigation obligation

Turkey baseline emissions, projected to 2030		659 MtCO ₂
Global mitigation requirement below baseline, projected to 2030	(A)	29,032 MtCO ₂
Turkey share of global Responsibility Capacity Index in 2015 to 2030 period	(B)	1.1%
Turkey mitigation obligation, projected to 2030	(A × B)	
as tonnes below baseline		302 MtCO ₂
as tonnes per capita		3.5 tCO ₂ /cap
as percent below baseline		46%
as per-capita <u>climate tax</u> (assuming global mitigation and adaptation costs = 2.0% of global GWP)		\$292
Turkey 1990 emissions		142 MtCO ₂
Turkey emissions allocation, projected to 2030		
as tons		357 MtCO ₂
as tonnes per capita		4.1 tCO ₂ /cap
as percent of 1990 emissions		252%
as percent above 1990 emissions		152%

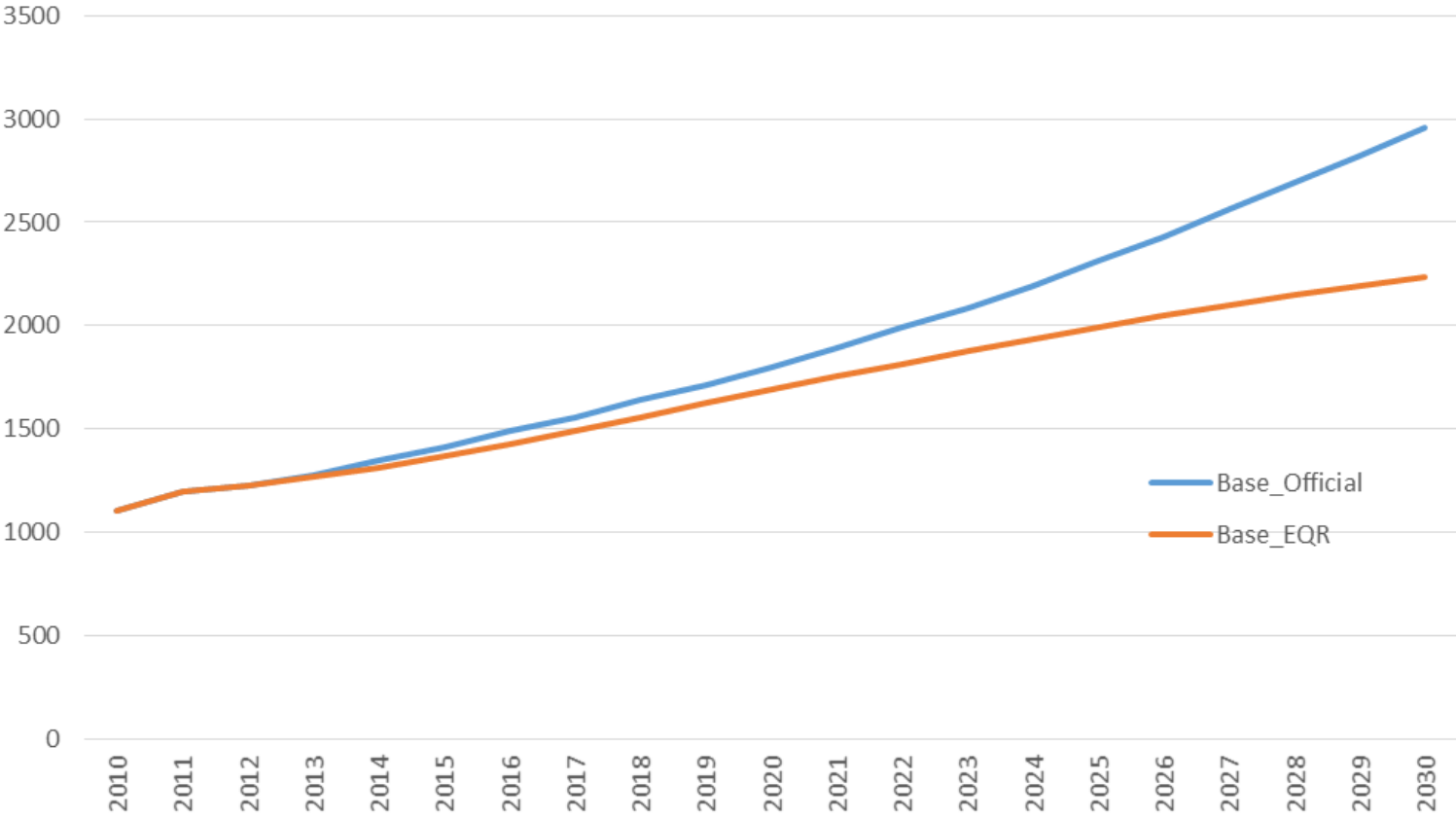
Climate Equity Reference Calculator

Country/region report in 2030 for Turkey

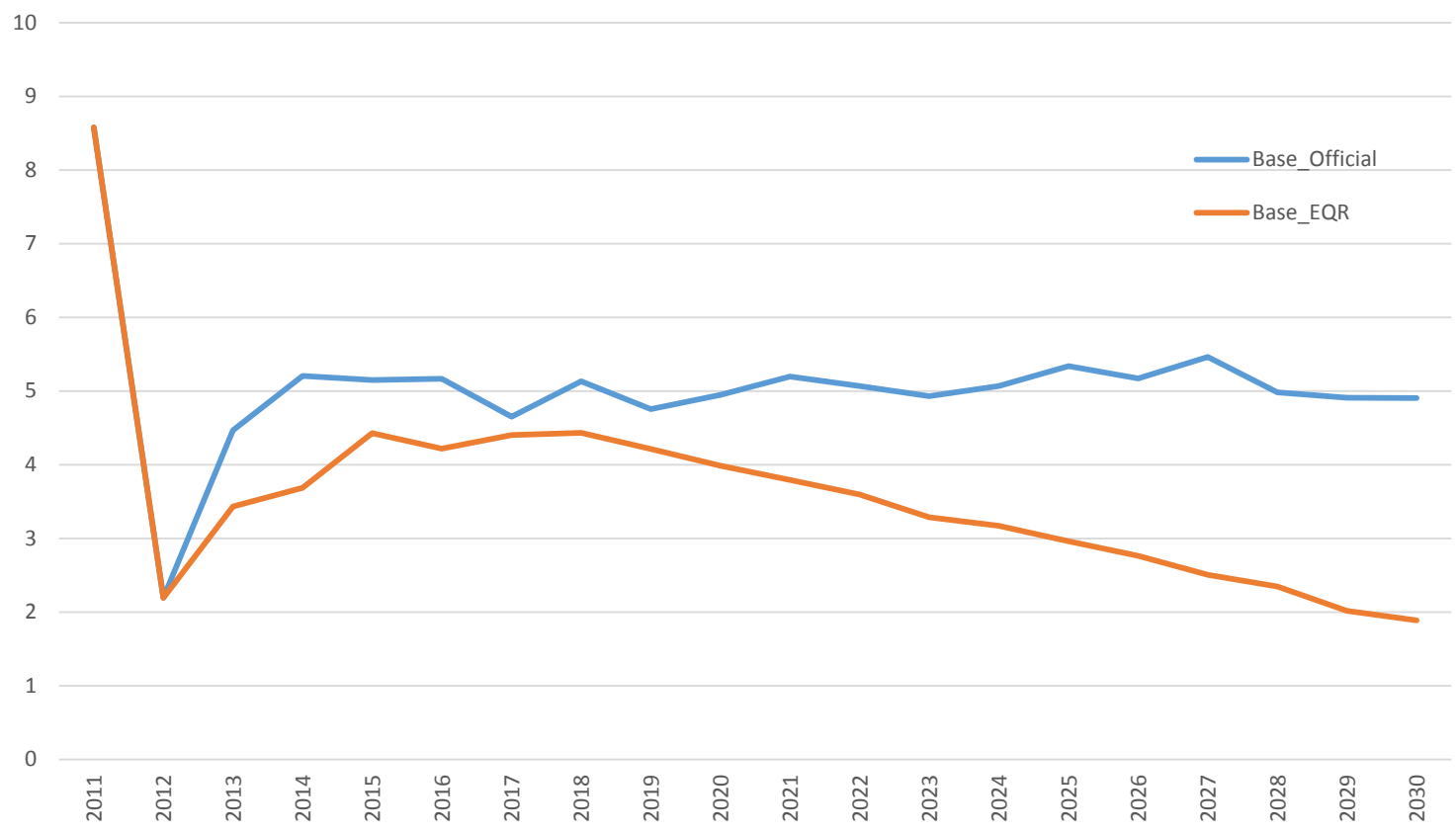
[Show settings](#)



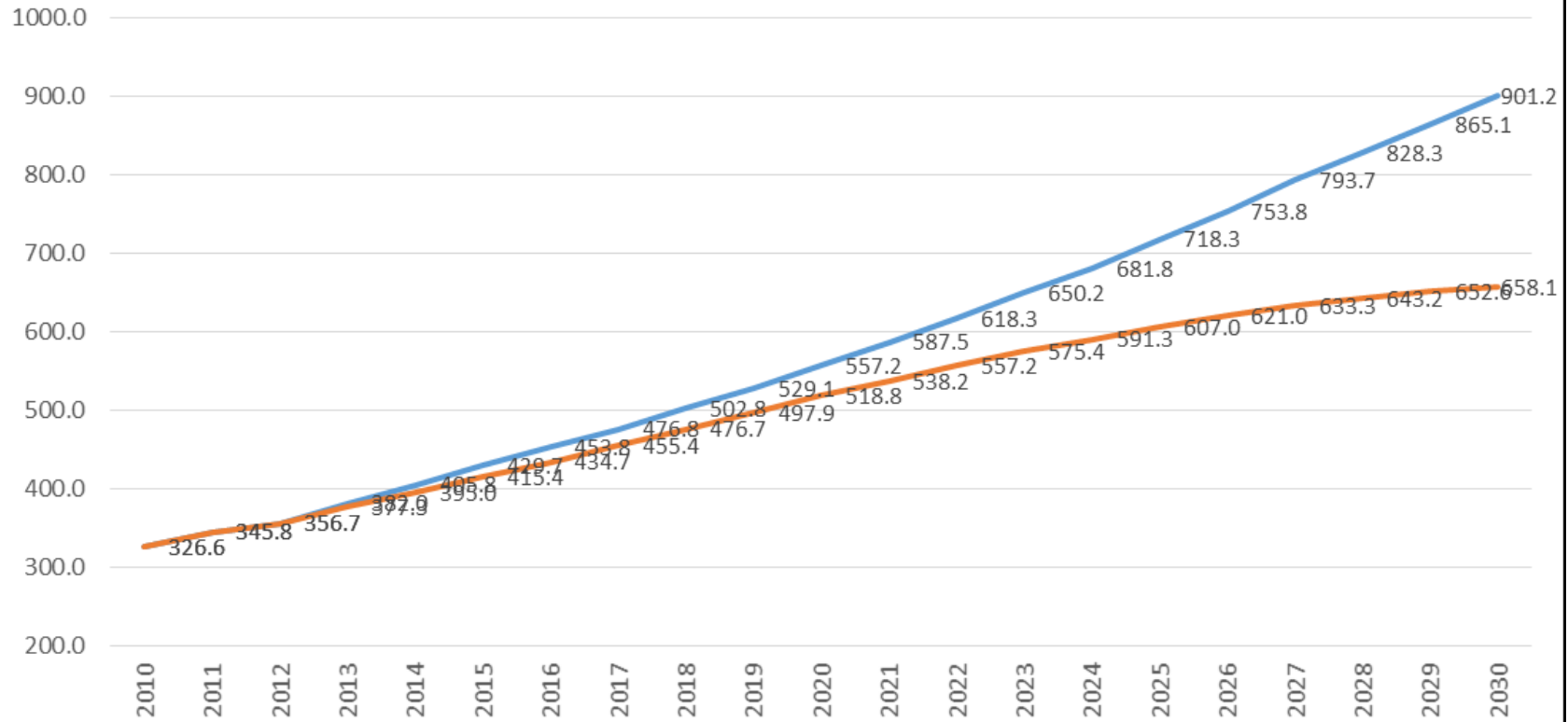
Officall and EQR Base Paths - Real GDP (2010 TRYs)



Officall and EQR Base Paths - Real GDP Growth (%)



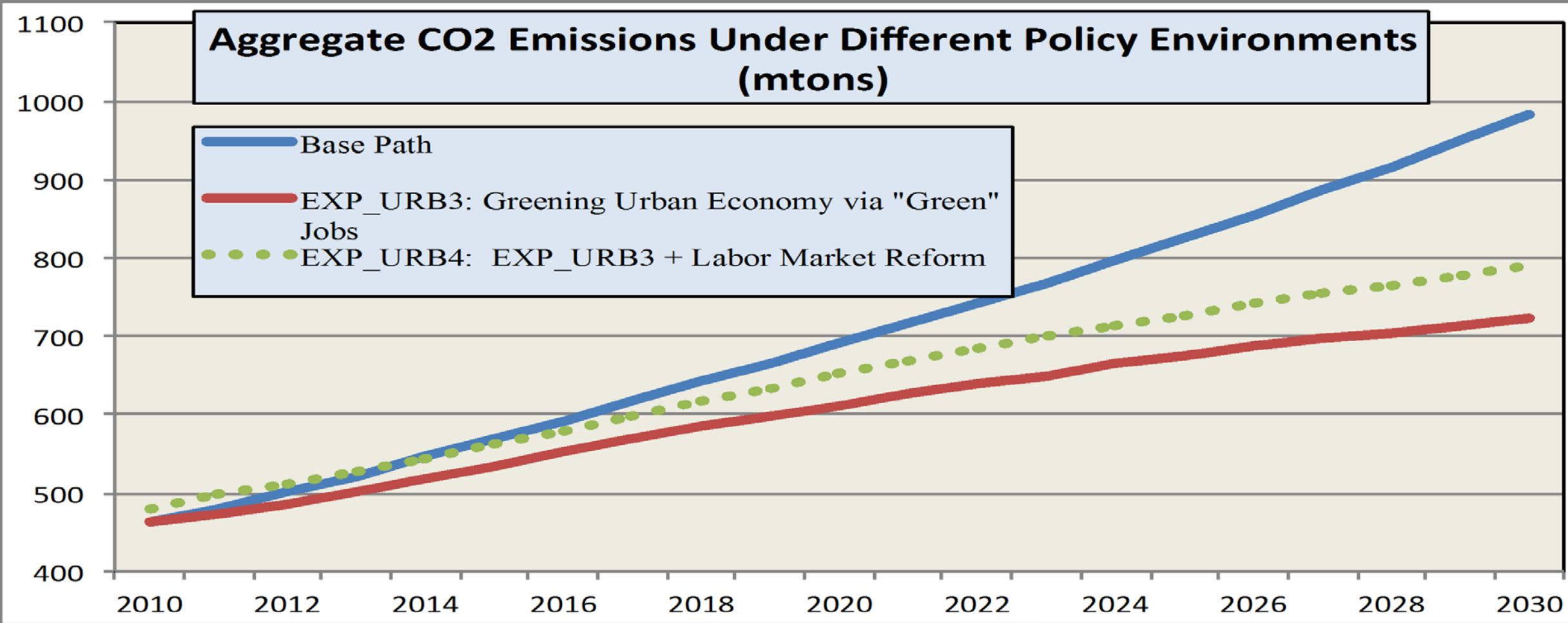
Officall and EQR Base Paths - CO2 Emissions
(million tonnes)



Benzer Çalışmalardan Örnekler

Aggregate CO2 Emissions Under Different Policy Environments (mtons)

- Base Path
- EXP_URB3: Greening Urban Economy via "Green" Jobs
- EXP_URB4: EXP_URB3 + Labor Market Reform



Total CO2 / GDP (kg/\$GDP)

- Base Path
- EXP_URB3: Greening Urban Economy via "Green" Jobs
- ● ● EXP_URB4: EXP_URB3 + Labor Market Reform

