

# İLLER BANKASI A.Ş. DIRECTORATE GENERAL

---

**Necla AKÇA**

**International Relations Department  
Manager**



# İLLER BANKASI A.Ş.

## OVERVIEW

- Introduction
- Capital and Partnership Structure
- Objectives and Activities
- Staff Composition
- Services
- Business Volume



ILBANK Genel Müdürlüğü, Ulus - ANKARA,1933



# HISTORY

---

İller Bank;

- was established in **1933**. It was originally called *Belediyeler Bankası (Bank of Municipalities)*.
- In **1945**, it was enlarged in a way to include Special Provincial Administrations and turned into *İller Bankası (Bank of Provinces)* through the Law no 4759.
- In **2011**, *İller Bankası Anonim Şirketi* was established through the Law 6107 .



# DESCRIPTION

---

**İL BANK** is a development and investment bank that:

- Meets local administrations' need for funding,
- Develops projects related to local administrations' services,
- Delivers consultancy service and
- Assists in implementation of technical urban projects as well as infrastructure and superstructure works.



İL BANK Genel Müdürlüğü, Ulus - ANKARA



# MISSION & VISION & STRATEGY

---

## MISSION

Contributing to sustainable urbanization by creating and developing projects aiming to meet local administrations' needs related to urbanization in line with international standards, providing loans, consultancy as well as technical assistance.

## VISION

Becoming an international development and investment bank with recognized service quality that leads the process of developing modern cities.

Delivering its services with an understanding of investment banking and total quality management approach.



# CAPITAL AND PARTNERSHIP STRUCTURE

---

- Bank's partners:  
Municipalities and Special  
Provincial Administrations.
- Its capital: 18 Billion TL.
- Its paid-up capital in 2014: 9,4  
Billion TL.



ILBANK Hizmet Binası, Dışkapı - ANKARA



# SOURCES OF CAPITAL

---

- A monthly 2% deduction from the total amount of tax revenue shares to be distributed to local administrations.
- 30% share from the annual net profits of the Bank after tax and other legal liabilities.
- Other amounts transferred to the Bank capital through other provisions of the legislation as well as all kinds of aids and donations offered additionally for the bank's capital.



# SOURCES OF INCOME

---

- Interests, commission fees and fund revenues from loans
- Capital collection
- Income from audits and consultancy services
- Interests generated from interbank fund transfers





# ACTIVITIES

---



Project Development

Financing

Technical Consultancy

Transferring shares from the  
central budget to local  
administrations



# TECHNICAL SERVICES

---

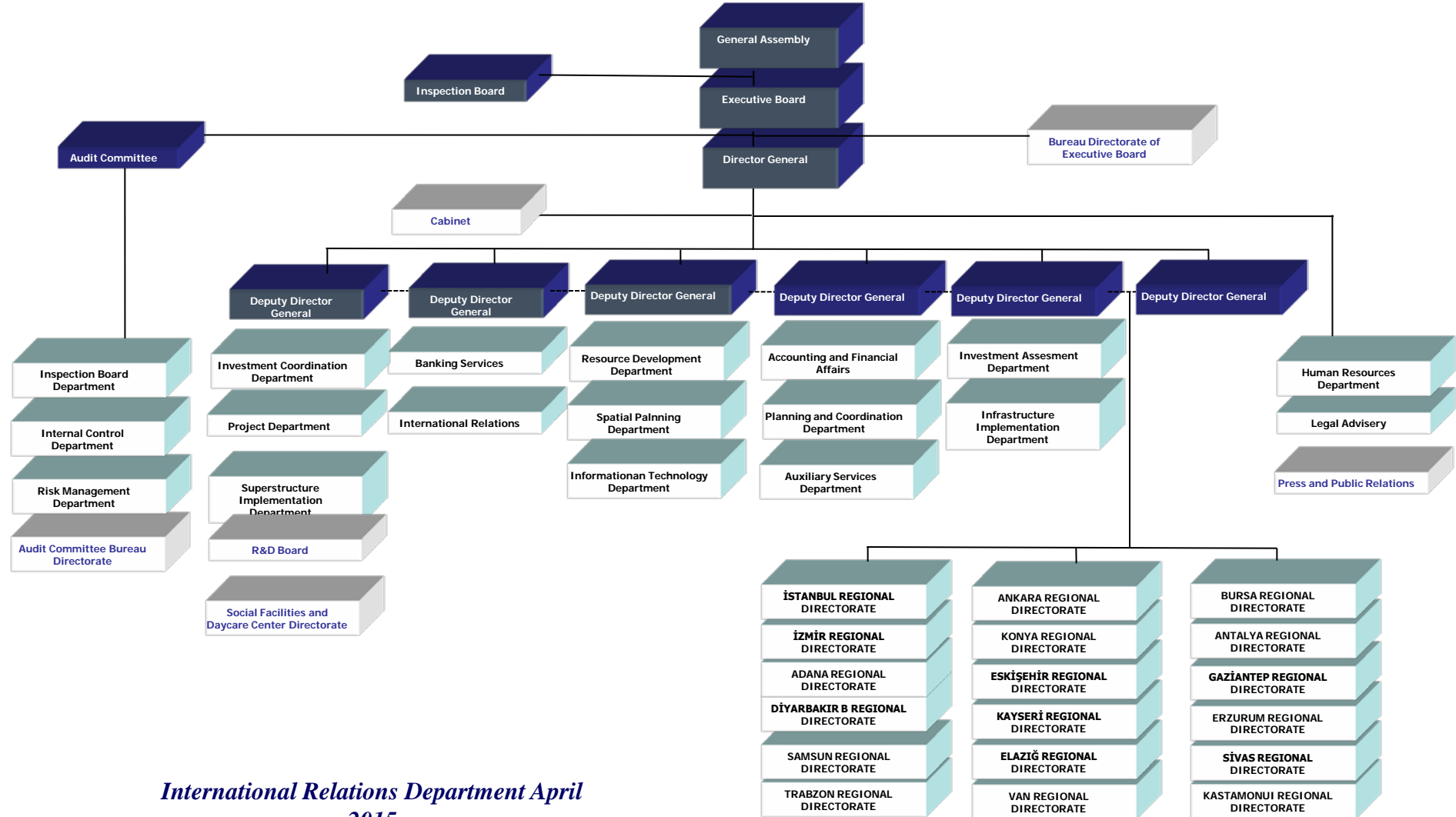
- Water Supply
- Potable Water Treatment
- Wastewater Treatment
- Sewage
- Solid Waste
- Marine Discharge



- Renewable Energy
- Urban Transportation
- Development Plan
- Map
- Superstructure



# ORGANIZATIONAL CHART



# STAFF COMPOSITION

28.02.2015 itibari ile

	<b>DIRECTORATE GENERAL</b>	<b>REGIONAL DIRECTORATE</b>	<b>TOTAL</b>
<b>Administrative</b>	<b>722</b>	<b>691</b>	<b>1.413</b>
<b>Technical</b>	<b>412</b>	<b>591</b>	<b>1.003</b>
<b>Worker</b>	<b>99</b>	<b>144</b>	<b>243</b>
<b>TOTAL</b>	<b>1.233</b>	<b>1.426</b>	<b>2.659</b>

- **14 Service Units at the Headquarter**
- **18 Regional Directorates across Turkey**



# İLBANK SERVICES CYCLE

- Water Supply
- Potable Water Treatment
- Sewage
- Solid Wastes
- Marine Discharge
- Superstructure
- Transportation
- Development Plan
- Maps
- Urban Transformation

**RESOURCES**

- Partners' shares
- Activity revenue
- Interest Revenue
- Audit and Consultancy Services

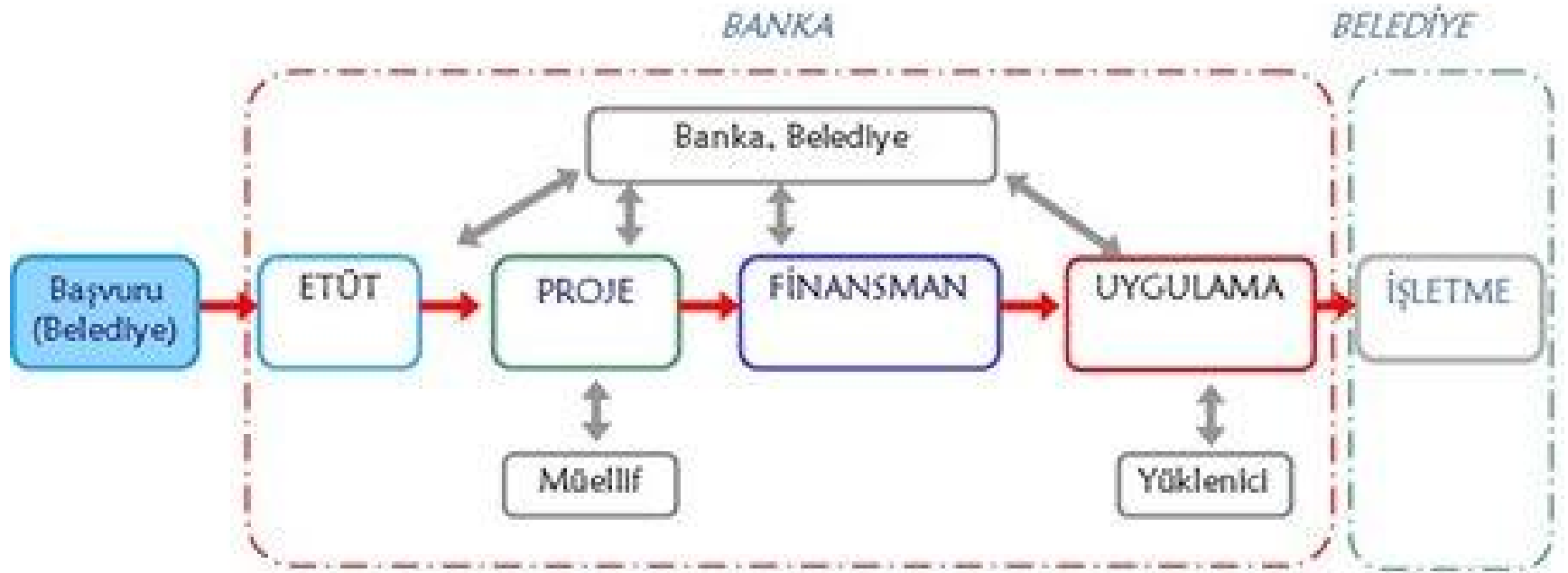
**OUTPUTS**

- Financing
- Project Development
- Consultancy and Technical Assistance

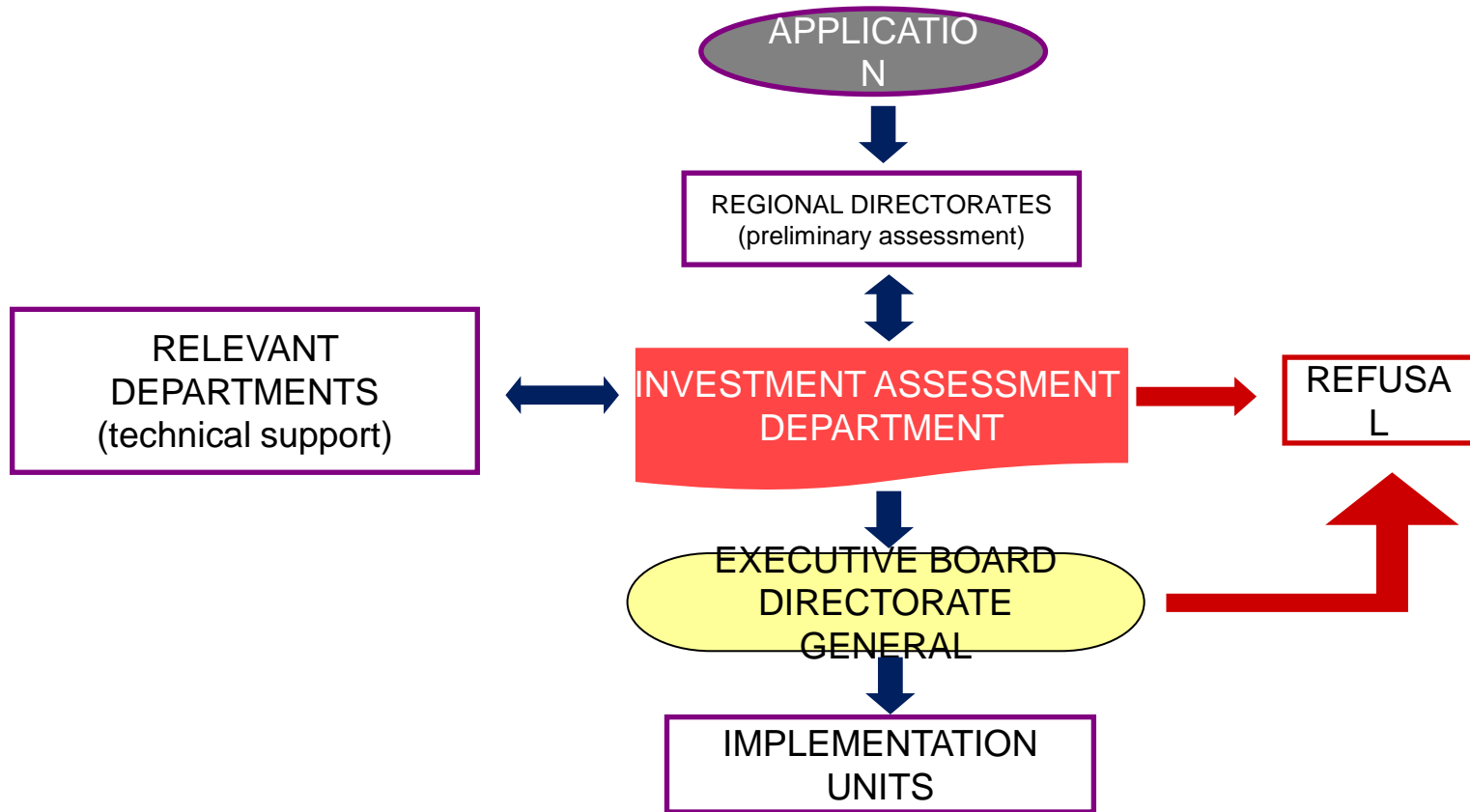
**SERVICE OPERATION**



# SERVICE FLOW CHART



# CREDIT FACILITY PROCESS



# PROJECT INVENTORY



Resource  
Transfer for 2014  
(K TL)

In 2003-2014, we provided:

- **489** zoning plan,
  - **1.360** mapping,
  - **941** potable water,
  - **758** sewage,
  - **833** superstructure facility projects
  - **Totally 4.381** works
- for local administrations.





## COOPERATION WITH INTERNATIONAL FINANCE INSTITUTIONS

---

- Japanese International Development Agency (JICA)
- World Bank (WB)
- European Investment Bank (EIB)
- German Investment Bank (KfW Group-Germany)
- Islamic Development Bank (IsDB)
- French Development Agency (AFD)
- International Finance Corporation (IFC)
- Saudi Development Fund
- Kuwait Arabic Economic Development Fund
- European Bank of Reconstruction and Development (EBRD)



# ***BUILDING FORCE OF TURKEY***

---



**İLBANK**

Contact:

**Necla AKÇA**

Manager

E-mail: [nakca@ilbank.gov.tr](mailto:nakca@ilbank.gov.tr)

Phone: +90 312 508 7901-03

Fax: +90 312 508 7948-49

